

# DHCD EA Monthly Report, Statewide Summary October 2019

## EA Applications and Placements

EA Applications	Oct-19	Sep-19	FY20 YTD
Families Applying for EA	678	623	2,585
Health & Safety Assessments Completed*	268	226	952
Families with Health & Safety Risk	242	192	822
Families Entering EA (Shelter, Motels, and HomeBASE)	388	359	1,504
Placement-to-Application Ratio	57%	58%	58%

**Notes:**

Families submitting more than one application during a month were counted once.

Families entering EA includes families entering shelter or hotels/motels and families diverted from shelter or hotels/motels into HomeBASE at the front door.

EA Placements	Oct-19		Sep-19		FY20 YTD	
	Number	Percent	Number	Percent	Number	Percent
Total Entering EA or HomeBASE	388	100%	359	100%	1,504	100%
Entering EA Shelter/Motels	313	81%	284	79%	1,222	81%
Presumptive Placements	58	15%	47	13%	221	15%
Shelters	313	81%	282	79%	1218	81%
Motels	0	0%	2	1%	4	<1%
HomeBASE Diversions (Front Door)	75	19%	75	21%	282	19%

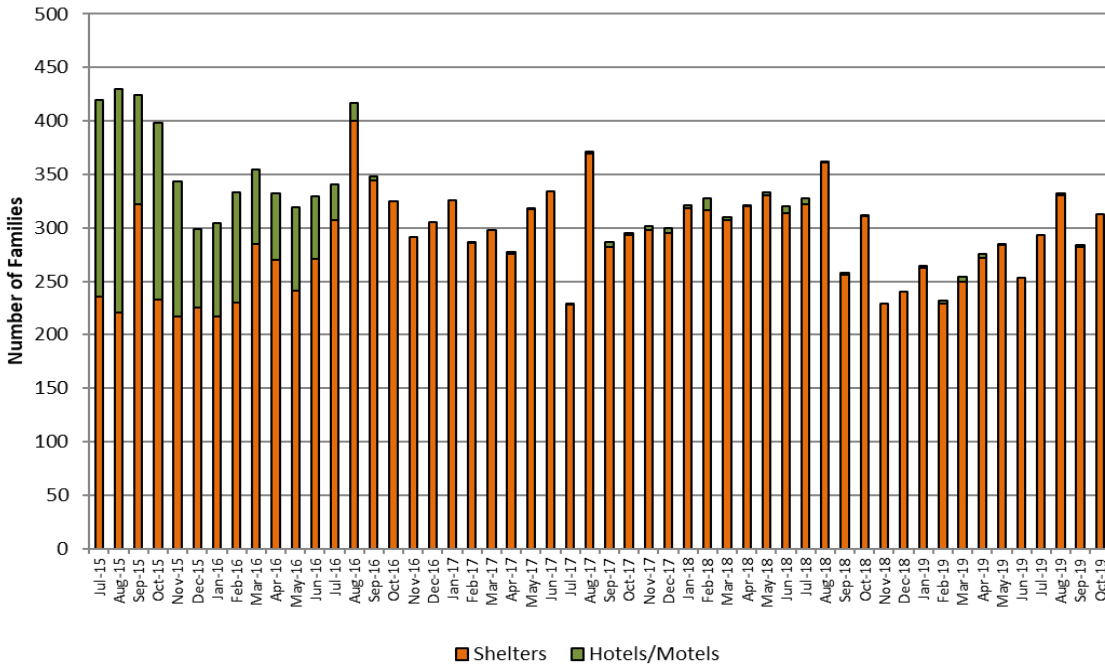
### EA Shelter/Motels Placements, Reasons for Homelessness

	Oct-19		Sep-19		FY20 YTD	
	Number	Percent	Number	Percent	Number	Percent
<b>Total</b>	<b>313</b>	<b>100%</b>	<b>284</b>	<b>100%</b>	<b>1,222</b>	<b>100%</b>
Domestic Violence	51	16%	50	18%	208	17%
Fire/Natural Disaster	1	<1%	2	1%	6	1%
Evict: Condemnation	2	<1%	3	1%	14	1%
Evict: Excused Conduct	1	<1%	1	<1%	11	<1%
Evict: Foreclosure	3	1%	1	<1%	6	<1%
Evict: Non Payment - Medical	1	<1%	1	<1%	2	<1%
Evict: Non Payment - Disability	0	0%	1	<1%	5	<1%
Evict: Non Payment - Income Loss	34	11%	29	10%	114	9%
Evict: Non Renewal of Tenancy	9	3%	0	<1%	11	<1%
Threatened Evict - Unauthorized Tenant	24	8%	9	3%	50	4%
H&S: Violent Conduct	12	4%	3	1%	27	2%
H&S: Mental Illness	2	<1%	4	1%	12	<1%
H&S: Substance Abuse	2	<1%	1	<1%	3	<1%
H&S: Conditions in Unit	5	2%	4	1%	14	1%
H&S: Irregular Housing situation	119	38%	119	42%	513	42%
H&S: Not Meant for Human Habitation	42	13%	47	17%	176	14%
TESI or Aid Pending	5	2%	9	3%	50	4%

**Note:** Families whose HomeBASE rental assistance benefit ended during the month may be placed in later months.

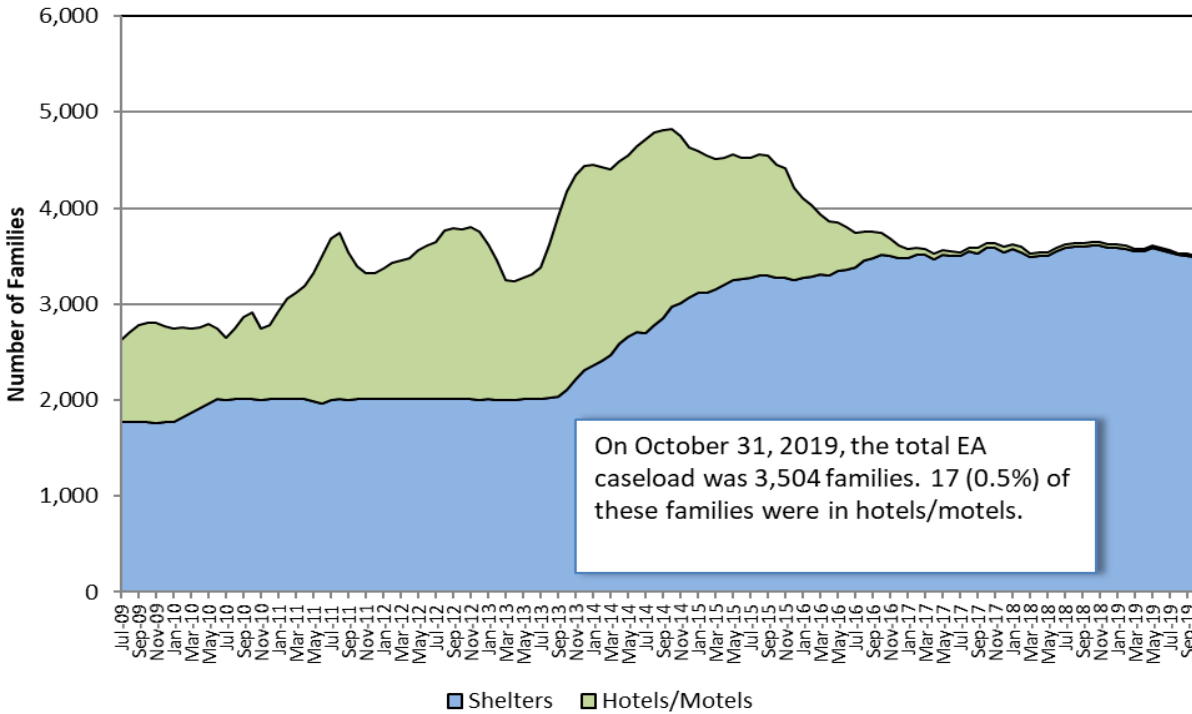
**Sources:** EA Daily Entry Reports and ASIST.

### EA Shelter and Hotel/Motel Placements



### EA Caseload

#### Average Daily EA Shelter & Hotel/Motel Caseload, Jul. 2009- October. 2019



**Note:** Methodology for calculating shelter caseload changed in FY15 from an average daily number of contracted units (minus vacancies) to an end-of-the-month count of occupied shelter units using DHCD's bed registry.

## Children Served

Age Range	Oct-19		Sep-19		FY20 Monthly Average	
	# Children	% Children	Number	Percent	Number	Percent
<b>Total</b>	<b>7,017</b>	<b>100%</b>	<b>7,022</b>	<b>100%</b>	<b>7,030</b>	<b>100%</b>
0-2 yrs.	1,520	22%	1,510	22%	1,536	22%
3-4 yrs.	967	14%	966	14%	986	14%
5-8 yrs.	1,625	23%	1,634	23%	1,622	23%
9-11 yrs.	1,037	15%	1,052	15%	1,046	15%
12-14 yrs.	873	12%	859	12%	850	12%
15-18 yrs.	818	12%	822	12%	813	12%
19-20 yrs.	177	3%	179	3%	178	3%

**Note:** Data indicate children active in EA shelters or hotels at end of the month.

## EA Exits

Families Exiting Shelter and Hotels/Motels	Oct-19		Sep-19		FY20 YTD	
	Number	Percent	Number	Percent	Number	Percent
<b>Total Exits</b>	<b>309</b>	<b>100%</b>	<b>283</b>	<b>100%</b>	<b>1,226</b>	<b>100%</b>
Abandoned	26	8%	34	12%	142	12%
Criminal Activity	1	<1%	1	<1%	2	<1%
Feasible Alternative Housing with HB	215	70%	178	63%	775	63%
Feasible Alternative Housing without HB	32	10%	30	11%	129	11%
Ineligible	8	3%	5	2%	22	2%
Rejected Placement	2	<1%	2	1%	6	<1%
NonCompliance	4	1%	1	0%	12	1%
Temporary Shelter Interruption	20	6%	18	6%	92	8%
Other/Unknown	1	0%	14	5%	46	4%

**Notes:**

Families terminated from shelter for abandoning their placements or non-compliance may return to the system pending an appeal.  
 Families receiving a Temporary Shelter Interruption may return to the system within 30 days.

Types of Subsidies	Oct-19		Sep-19		FY20 YTD	
	Number	Percent	Number	Percent	Number	Percent
<b>Total Families Receiving Subsidies</b>	<b>232</b>	<b>100%</b>	<b>196</b>	<b>100%</b>	<b>860</b>	<b>100%</b>
ESG	0	0%	1	1%	4	0%
HomeBASE	215	93%	178	91%	775	90%
HUD CoC	8	3%	1	1%	24	3%
MRVP	5	2%	1	1%	21	2%
Private Subsidized Housing	13	6%	9	5%	41	5%
Section 8 Mobile Voucher	93	40%	88	45%	334	39%
Section 8 Project-Based Voucher	15	6%	4	2%	38	4%
Other Public Housing	18	8%	14	7%	65	8%
Transportation	2	1%	1	1%	9	1%

**Notes:**

Families may receive multiple subsidy types. Therefore, the sum of the subsidy types do not equal the number of families.  
 Data based on date of shelter/hotel exit. HomeBASE data based on the date that checks are issued may vary.

## RAFT - Homelessness Prevention

RAFT	Oct-19		Sep-19		YTD 20 YTD	
	Number	Percent	Number	Percent	Number	Percent
<b>Total Applying</b>	<b>949</b>		<b>657</b>		<b>2,893</b>	
Total Approved	872	100%	636	100%	2,666	100%
Upstream rent arrears-public/subsidized	39	4%	33	5%	126	5%
Upstream rent arrears-market rent	96	11%	75	12%	248	9%
Upstream mortgage arrears	7	1%	8	1%	21	1%
Doubled up and asked to leave	230	26%	178	28%	737	28%
Domestic violence	26	3%	6	1%	56	2%
Eviction-public/subsidized	111	13%	67	11%	295	11%
Eviction-market rent	147	17%	144	23%	542	20%
Foreclosure	7	1%	12	2%	38	1%
Fire/flood/natural disaster	10	1%	4	1%	27	1%
Health/safety	46	5%	29	5%	151	6%

**DHCD - EA Monthly Report  
October 2019**

	Oct #	Oct %	Sept #	YTD #	YTD %
<b>Families Applying for EA</b>					
<b>Total</b>	<b>678</b>	<b>100%</b>	<b>623</b>	<b>2,585</b>	<b>100%</b>
Boston	144	21%	162	603	23%
Central Mass	53	8%	54	226	9%
North Shore	202	30%	187	725	28%
South Shore	105	15%	75	380	15%
Western Mass	174	26%	145	651	25%
<b>Families Placed in EA Shelter and Hotels/Motels</b>					
<b>Total</b>	<b>313</b>	<b>100%</b>	<b>284</b>	<b>1,222</b>	<b>100%</b>
Boston	131	42%	104	423	35%
Central Mass	29	9%	23	125	10%
North Shore	49	16%	54	238	19%
South Shore	52	17%	52	236	19%
Western Mass	52	17%	51	200	16%
<b>HomeBASE Entries (Diversion and Exits)</b>					
<b>Total</b>	<b>322</b>	<b>100%</b>	<b>241</b>	<b>1,147</b>	<b>100%</b>
Berkshire Housing	6	2%	3	23	2%
Community Teamwork, Inc.	24	7%	32	108	9%
Franklin County	1	<1%	4	8	<1%
Housing Assistance Corp.	7	2%	4	17	1%
Way Finders	65	20%	53	241	21%
Metro Housing Boston	121	38%	54	365	32%
RCAP Solutions	10	3%	3	28	2%
South Middlesex Opportunity Council	10	3%	9	45	4%
NeighborWorks Housing Solutions	51	16%	54	204	18%
Lynn Housing Authority	14	4%	16	57	5%
Central MA Housing Alliance	13	4%	8	51	4%

**Notes**

Average Daily Number of Families in Hotels is calculated as the average across weekly point-in-time estimates from the reported month; Hotel region indicates region of originating eligibility office.

Totals may not equal the sum or regions due to rounding.

**Sources:** EA Daily Entry Report, ASIST, and EA Weekly Motel Reports.

**DHCD - EA Monthly Report, Cumulative Data  
October 2019**

	Current Month		Jul	Aug	Sept	YTD #	YTD %
	Oct #	Oct %					
<b>Families Applying for EA</b>	<b>678</b>	<b>100%</b>	<b>648</b>	<b>636</b>	<b>623</b>	<b>2,585</b>	<b>100%</b>
Boston	144	21%	144	153	162	603	23%
Central Mass	53	8%	58	61	54	226	9%
North Shore	202	30%	171	165	187	725	28%
South Shore	105	15%	101	99	75	380	15%
Western Mass	174	26%	174	158	145	651	25%
<b>Health &amp; Safety Assessment</b>							
<b>H&amp;S Assessment Completed</b>	<b>268</b>	<b>100%</b>	<b>207</b>	<b>251</b>	<b>226</b>	<b>952</b>	<b>100%</b>
Families with H&S Risk	242	90%	177	211	192	822	86%
<b>Families Placed in Shelter/Motels</b>							
<b>Total</b>	<b>313</b>	<b>100%</b>	<b>293</b>	<b>332</b>	<b>284</b>	<b>1,222</b>	<b>100%</b>
Families Placed in Hotels/Motels	0	0%	0	2	2	4	0%
Presumptive Placement	58	19%	50	66	47	221	18%
Boston	131	42%	92	96	104	423	35%
Central Mass	29	9%	38	35	23	125	10%
North Shore	49	16%	63	72	54	238	19%
South Shore	52	17%	56	76	52	236	19%
Western Mass	52	17%	44	53	51	200	16%
<b>Monthly Caseload (# of Families)</b>	<b>10/31/19</b>		<b>7/31/2019</b>	<b>08/31/19</b>	<b>09/30/19</b>	<b>YTD Average</b>	
<b>Total</b>	<b>3,504</b>		<b>3,557</b>	<b>3,527</b>	<b>3,521</b>	<b>3,527</b>	
Shelter	3,487		3,540	3,509	3,504	3,510	
Hotel/Motel	17		17	18	17	17	
<b>Children Served</b>							
<b>Total</b>	<b>7,017</b>	<b>100%</b>	<b>7,065</b>	<b>7,016</b>	<b>7,022</b>	<b>7,030</b>	<b>100%</b>
0-2 yrs.	1,520	22%	1,577	1,538	1,510	1,536	22%
3-4 yrs.	967	14%	1,016	996	966	986	14%
5-8 yrs.	1,625	23%	1,611	1,617	1,634	1,622	23%
9-11 yrs.	1,037	15%	1,048	1,045	1,052	1,046	15%
12-14 yrs.	873	12%	824	843	859	850	12%
15-18 yrs.	818	12%	811	799	822	813	12%
19-20 yrs.	177	3%	178	178	179	178	3%

	Current Month		Jul	Aug	Sept	YTD #	YTD %
	Oct #	Oct %					
<b>Placement to Application Ratio</b>	<b>57%</b>		<b>54%</b>	<b>64%</b>	<b>58%</b>	<b>58%</b>	
<b>Reasons for Homelessness, Shelter/Motels</b>							
<b>Total</b>	<b>313</b>	<b>100%</b>	<b>293</b>	<b>332</b>	<b>284</b>	<b>1,222</b>	<b>100%</b>
Domestic Violence	51	16%	46	61	50	208	17%
Fire/Natural Disaster	1	<1%	3	0	2	6	1%
Evict: Condemnation	2	<1%	7	2	3	14	1%
Evict: Excused Conduct	1	<1%	2	7	1	11	<1%
Evict: Foreclosure	3	1%	0	2	1	6	<1%
Evict: Non Payment - Medical	1	<1%	0	0	1	2	<1%
Evict: Non Payment - Disability	0	0%	1	3	1	5	<1%
Evict: Non Payment - Income Loss	34	11%	22	29	29	114	9%
Evict: Non Renewal of Tenancy	9	3%	1	1	0	11	<1%
Threatened Evict - Unauthorized Tenant	24	8%	7	10	9	50	4%
H&S: Violent Conduct	12	4%	3	9	3	27	2%
H&S: Mental Illness	2	<1%	2	4	4	12	<1%
H&S: Substance Abuse	2	<1%	0	0	1	3	<1%
H&S: Conditions in Unit	5	2%	2	3	4	14	1%
H&S: Irregular Housing situation	119	38%	138	137	119	513	42%
H&S: Not Meant for Human Habitation	42	13%	42	45	47	176	14%
Aid Pending	1	0%	6	11	2	20	2%
Replacement/TESI	4	1%	11	8	7	30	2%
<b>Shelter and Hotel/Motel Exits</b>							
<b>Total</b>	<b>309</b>	<b>100%</b>	<b>298</b>	<b>336</b>	<b>283</b>	<b>1,226</b>	<b>100%</b>
Abandoned	26	8%	37	45	34	142	12%
Criminal Activity/Fraud	1	<1%	0	0	1	2	<1%
Feasible Alternative Housing with HB	215	70%	177	205	178	775	63%
Feasible Alternative Housing without HB	32	10%	27	40	30	129	11%
Ineligible	8	3%	4	5	5	22	2%
No Show/Rejected Placement	2	<1%	1	1	2	6	<1%
NonCompliance/Termination for Cause	4	1%	3	4	1	12	1%
Temporary Shelter Interruption	20	6%	28	26	18	92	8%
Other/Unknown	1	0%	21	10	14	46	4%

	Current Month		Jul	Aug	Sept	YTD #	YTD %
	Oct #	Oct %					
<b>Hotel/Motel Exits</b>							
<b>Total</b>	<b>2</b>	<b>100%</b>	<b>1</b>	<b>1</b>	<b>2</b>	<b>6</b>	<b>100%</b>
Abandoned	2	100%	0	0	0	2	33%
Criminal Activity	0	0%	0	0	0	0	0%
Feasible Alternative Housing with HB	0	0%	1	1	2	4	67%
Feasible Alternative Housing without HB	0	0%	0	0	0	0	0%
Ineligible	0	0%	0	0	0	0	0%
No Show/Rejected Placement	0	0%	0	0	0	0	0%
NonCompliance/Termination for Cause	0	0%	0	0	0	0	0%
Temporary Shelter Interruption	0	0%	0	0	0	0	0%
Other/Unknown	0	0%	0	0	0	0	0%
<b>Types of Subsidies at Exit</b>							
<b>Total Families Receiving Subsidies</b>	<b>232</b>	<b>100%</b>	<b>205</b>	<b>227</b>	<b>196</b>	<b>860</b>	<b>100%</b>
ESG	0	0%	2	1	1	4	0%
HomeBASE	215	93%	177	205	178	775	90%
HUD CoC	8	3%	5	10	1	24	3%
MRVP	5	2%	5	10	1	21	2%
Private Subsidized Housing	13	6%	8	11	9	41	5%
Section 8 Mobile Voucher	93	40%	66	87	88	334	39%
Section 8 Project-Based Voucher	15	6%	10	9	4	38	4%
Other Public Housing	18	8%	13	20	14	65	8%
Transportation	2	1%	1	5	1	9	1%
<b>HomeBASE Entries (Diversion and Exits)</b>							
<b>Total</b>	<b>322</b>	<b>100%</b>	<b>267</b>	<b>317</b>	<b>241</b>	<b>1,147</b>	<b>100%</b>
Berkshire Housing	6	2%	11	3	3	23	2%
Community Teamwork, Inc.	24	7%	15	37	32	108	9%
Franklin County	1	<1%	1	2	4	8	<1%
Housing Assistance Corp.	7	2%	1	5	4	17	1%
Way Finders	65	20%	59	64	53	241	21%
Metro Housing Boston	121	38%	85	105	54	365	32%
RCAP Solutions	10	3%	8	7	3	28	2%
South Middlesex Opportunity Council	10	3%	10	16	9	45	4%
NeighborWorks Housing Solutions	51	16%	49	50	54	204	18%
Lynn Housing Authority	14	4%	12	15	16	57	5%
Central MA Housing Alliance	13	4%	17	13	8	51	4%



	Current Month		Jul	Aug	Sept	YTD #	YTD %
	Oct #	Oct %					
<b>HomeBASE Diversion by Region</b>							
<b>Total</b>	<b>75</b>	<b>100%</b>	<b>57</b>	<b>75</b>	<b>75</b>	<b>282</b>	<b>100%</b>
Berkshire Housing	2	3%	2	1	1	6	2%
Community Teamwork, Inc.	7	9%	3	16	13	39	14%
Franklin County	1	<1%	0	0	0	1	<1%
Housing Assistance Corp.	4	5%	0	2	2	8	3%
Way Finders	25	33%	20	24	23	92	33%
Metro Housing Boston	5	7%	3	4	2	14	5%
RCAP Solutions	2	3%	1	3	1	7	2%
South Middlesex Opportunity Council	0	0%	1	0	0	1	<1%
NeighborWorks Housing Solutions	20	27%	24	19	22	85	30%
Lynn Housing Authority	7	9%	1	4	9	21	7%
Central MA Housing Alliance	2	3%	3	2	1	8	3%
<b>HomeBASE Shelter Exits by Region</b>							
<b>Total</b>	<b>245</b>	<b>100%</b>	<b>207</b>	<b>238</b>	<b>166</b>	<b>856</b>	<b>100%</b>
Berkshire Housing	4	2%	9	2	2	17	2%
Community Teamwork, Inc.	17	7%	12	21	19	69	8%
Franklin County	0	0%	1	2	4	7	1%
Housing Assistance Corp.	3	<1%	1	3	2	9	1%
Way Finders	40	16%	39	40	30	149	17%
Metro Housing Boston	114	47%	79	97	52	342	40%
RCAP Solutions	8	3%	7	4	2	21	2%
South Middlesex Opportunity Council	10	4%	9	16	9	44	5%
NeighborWorks Housing Solutions	31	13%	25	31	32	119	14%
Lynn Housing Authority	7	3%	11	11	7	36	4%
Central MA Housing Alliance	11	4%	14	11	7	43	5%
<b>HomeBASE Hotel Exits by Region</b>							
<b>Total</b>	<b>2</b>	<b>100%</b>	<b>3</b>	<b>4</b>	<b>0</b>	<b>9</b>	<b>100%</b>
Berkshire Housing	0	0%	0	0	0	0	0%
Community Teamwork, Inc.	0	0%	0	0	0	0	0%
Franklin County	0	0%	0	0	0	0	0%
Housing Assistance Corp.	0	0%	0	0	0	0	0%
Way Finders	0	0%	0	0	0	0	0%
Metro Housing Boston	2	100%	3	4	0	9	100%
RCAP Solutions	0	0%	0	0	0	0	0%
South Middlesex Opportunity Council	0	0%	0	0	0	0	0%
NeighborWorks Housing Solutions	0	0%	0	0	0	0	0%
Lynn Housing Authority	0	0%	0	0	0	0	0%
Central MA Housing Alliance	0	0%	0	0	0	0	0%

	Current Month		Jul	Aug	Sept	YTD #	YTD %
	Oct #	Oct %					
<b>RAFT</b>							
<b>Total Applying</b>	<b>949</b>		<b>560</b>	<b>727</b>	<b>657</b>	<b>2,893</b>	
<b>Total Approved</b>	<b>872</b>	<b>100%</b>	<b>468</b>	<b>690</b>	<b>636</b>	<b>2,666</b>	<b>100%</b>
Upstream rent arrears-public/subsidized	39	4%	14	40	33	126	5%
Upstream rent arrears-market rent	96	11%	17	60	75	248	9%
Upstream mortgage arrears	7	1%	2	4	8	21	1%
Doubled up and asked to leave	230	26%	154	175	178	737	28%
Domestic violence	26	3%	14	10	6	56	2%
Eviction-public/subsidized	111	13%	31	86	67	295	11%
Eviction-market rent	147	17%	100	151	144	542	20%
Foreclosure	7	1%	12	7	12	38	1%
Fire/flood/natural disaster	10	1%	6	7	4	27	1%
Health/safety	46	5%	45	31	29	151	6%
Overcrowding	9	1%	9	10	4	32	1%
Utility shutoff	93	11%	45	73	49	260	10%
Other	51	6%	19	36	27	133	5%